



105 Bonnie Drive  
Butler, PA 16002  
724-283-4681  
724-283-5939 (fax)  
www.bwieagle.com

# PRODUCT INFORMATION BULLETIN

## AIR-EAGLE® XLT 900 MHz RF Transmitter MODEL 441-1400-DCI-120VAC

### DESCRIPTION

The Air-Eagle XLT, MODEL 441-1400-DCI-120VAC is an R.F. transmitter capable of sending up to four 5-24VDC input commands to any Air-Eagle XLT Receiver. The TX and RX combine to create a long range radio frequency system that operates hazardous or hard-to-reach electrical apparatus from safe, convenient locations of up to 2500 feet away (Up to 4 mile range with optional antennas). This unit is user-programmable for up seven network frequencies to allow multiple systems to operate simultaneously in the same area without interference.

### APPROVALS

United States (FCC)	MCQ-XBPS3B
Canada (IC)	1846A-XBPS3B

### INSTALLATION

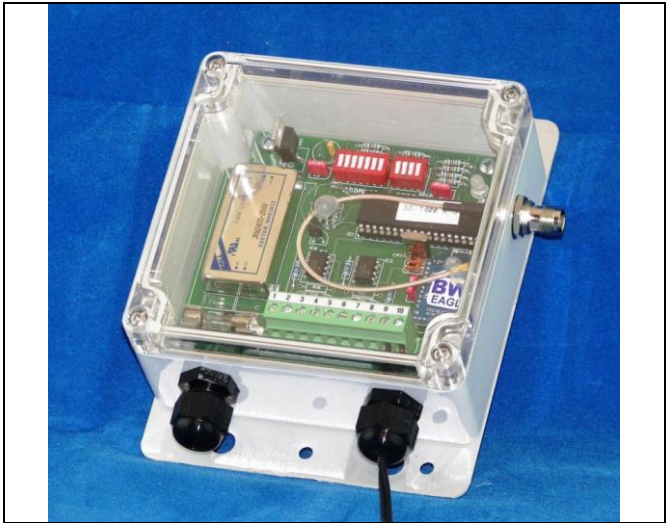
1. Mount the AIR-EAGLE XLT TRANSMITTER in a convenient location.
2. Install wiring to input terminal strip.
3. Install antenna to TNC connector on side of unit.
4. Plug supplied AC wall plug adapter into 110VAC outlet.

### TERMINAL STRIP WIRING

Wire as shown based on number of voltage inputs									
1	2	3	4	5	6	7	8	9	10
Ch.1 Input 5-24VDC (-)	Ch.1 Input 5-24VDC (+)	Ch.2 Input 5-24VDC (-)	Ch.2 Input 5-24VDC (+)	Ch.3 Input 5-24VDC (-)	Ch.3 Input 5-24VDC (+)	Ch.4 Input 5-24VDC (-)	Ch.4 Input 5-24VDC (+)	(-) 9-36VDC input from included AC wall adapter	(+) 9-36VDC input from included AC wall adapter

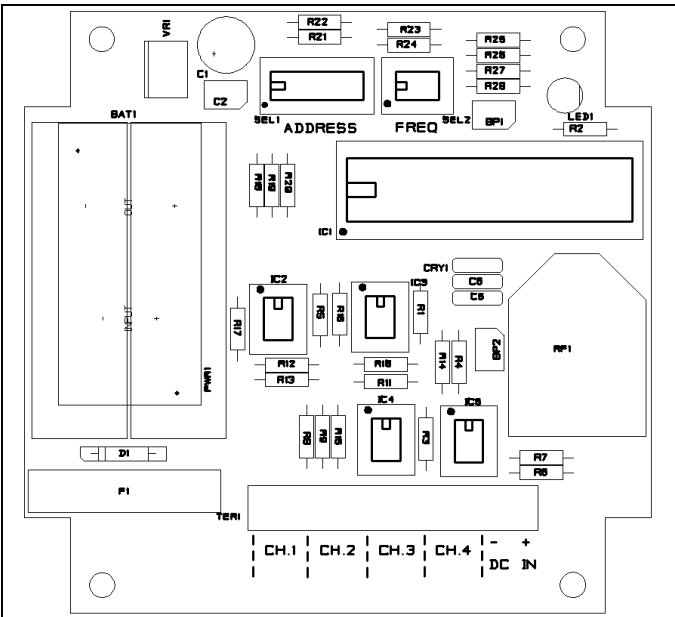
### GENERAL OPERATION

Transmission occurs when 5-24VDC is applied to the input. Transmission continues while 15-24VDC is present and ceases when 5-24VDC is removed.



Dimensions (with mounting plate) 6.3" L x 4.8" W x 2.3" H

### CONTROLS & INDICATORS



TX LED	Illuminates continuously while voltage is present on any input and unit is transmitting.
Voltage Input Channels 1-4	Transmits individual RF codes to the receiver

# AIR-EAGLE® XLT

900 MHz RF Transmitter

**MODEL 441-1400-DCI-120VAC**

## DIGITAL ADDRESS & FREQUENCY SET-UP

This transmitter is factory programmed to Frequency #1 and Digital Address "0". These settings can be changed by the user in any combination **but must match the receiver that is set up to communicate with this transmitter. Note – only change digital address if using with a digitally addressable receiver. Otherwise, the digital address must be kept at the default of Digital Address "0".**

- 1) Remove power from unit
- 2) Remove top cover.
- 3) Select desired address and/or network frequency using table below.
- 4) Reattach cover and apply power.
- 5) Programming is now complete.

SEL1	Seven dip switches for selecting digital address of this transmitter (Maximum of 128 combinations)			
SEL 2 (SW 1-3):  (NETWORK FREQUENCY)	Network Frequency	SW1	SW2	SW3
	1	OPEN	OPEN	OPEN
	2	CLOSED	OPEN	OPEN
	3	OPEN	CLOSED	OPEN
	4	CLOSED	CLOSED	OPEN
	5	OPEN	OPEN	CLOSED
	6	CLOSED	OPEN	CLOSED
7	OPEN	CLOSED	CLOSED	
SEL2 (SW4)	Reserved for future use			

## SPECIFICATIONS

DC Input	9 - 36 VDC @ 10 Watts
Transmit Data	Four 5-24VDC Inputs
Transmit Frequency	900MHz Spread Spectrum
RF Output Power	250 mW
Transmit Range	Approximately 2500 Feet w/standard antenna
Transmitter Channels	7 Independent Network Frequencies
Enclosure	Polycarbonate, NEMA 4, IP66
Operating Temperature	-40° F to +185° F

## REPLACEMENT PARTS & ACCESSORIES

PC Board (Main)	441-1402-DCI
Standard Antenna (Included):	
900MHz Portable Antenna (For distances up to 2500 feet*)	49-1103
Optional Antennas and Accessories:	
900MHz Omni Directional Antenna (For distances up to 2 miles*)	49-3101
900MHz 13dB Yagi Antenna Long Range Operation (For distances up to 4 miles*)	49-3102
Flex Coax Cable w/Connectors	49-4000-XX (XX = # of Feet)
* = Line of Sight	

## LIMITED WARRANTY STATEMENT

BWI Eagle Inc. warrants the Air-Eagle Remote Control System, if properly used and installed, will be free from defects in material and workmanship for a period of 1 year after date of purchase. Said warranty to include the repair or replacement of defective equipment. This warranty does not cover damage due to external causes, including accident, problems with electrical power, usage not in accordance with product instructions, misuse, neglect, alteration, repair, improper installation, or improper testing. This limited warranty, and any implied warranties that may exist under state law, apply only to the original purchaser of the equipment, and last only for as long as such purchaser continues to own the equipment. This warranty replaces all other warranties, express or implied including, but not limited to, the implied warranties or merchantability and fitness for a particular purpose. BWI Eagle makes no express warranties beyond those stated here. BWI disclaims without limitation, implied warranties of merchantability and fitness for a particular purpose. Some jurisdictions do not allow the exclusion of implied warranties so this limitation may not apply to you. To obtain warranty service, contact BWI Eagle for a return material authorization. When returning equipment to BWI Eagle, the customer assumes the risk of damage or loss during shipping and is responsible for the shipping costs incurred.

DOCUMENT DATE: 2/21/17 / PRODUCT REV.3



105 Bonnie Drive  
Butler, PA 16002  
(724) 283-4681  
Fax (724) 283-5939  
[www.bwieagle.com](http://www.bwieagle.com)