



105 Bonnie Drive  
Butler, PA 16002  
724-283-4681  
724-283-5939 (fax)  
www.bwieagle.com

# PRODUCT INFORMATION BULLETIN

## AIR-EAGLE® SR PLUS 2.4 GHz RF Transceiver MODEL 36-6000-120VAC

### DESCRIPTION

The AIR-EAGLE SR PLUS RF TRANSCEIVER IS a dual I/O unit designed to transmit and receive unique signals from another transceiver located up to 600 feet away. This model comes equipped with three contact inputs and two high current SPDT relay outputs. This allows the user to not only transmit information out, but receive a confirming signal back that the operation was performed. The Air-Eagle SR PLUS TRX is user-programmable for up to eight network frequencies to allow multiple systems to operate simultaneously in the same area and utilizes spread-spectrum technology and provides the utmost security and reliability even in the noisiest RF environments.

### APPROVALS

United States (FCC)	OUR-XBEEPRO
Canada (IC)	4214A-XBEEPRO
Europe (CE)	ETSI

### INSTALLATION

DISCONNECT Power from all equipment before installation.

1. Mount the control unit in a convenient location.
2. Install control wiring to terminal strip.
3. Attach antenna to TNC connector located on the right side on the enclosure.
4. Plug supplied AC to DC wall plug adapter into 120VAC power outlet.

### PC BOARD SET-UP INFORMATION

Make the following connections on the PC Board Terminal Strip (TER1)

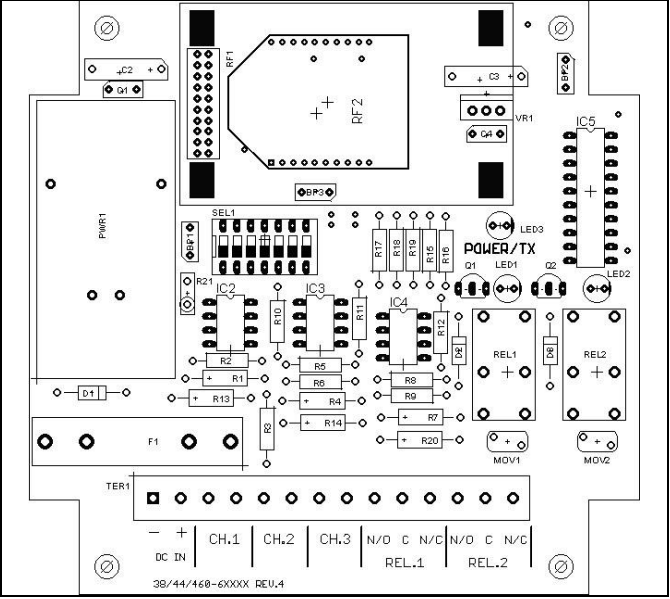
TERMINAL STRIP WIRING (TER1)		
Terminal 1	Negative (-) 12VDC INPUT	From supplied 120VAC wall plug adapter
Terminal 2	Positive (+) 12VDC INPUT	
Terminal 3	CH1 Dry Contact Input (Common)	
Terminal 4	CH1 Dry Contact Input	
Terminal 5	CH2 Dry Contact Input (Common)	
Terminal 6	CH2 Dry Contact Input	
Terminal 7	CH3 Dry Contact Input (Common)	
Terminal 8	CH3 Dry Contact Input	
Terminal 9	CH1 Relay N/O	
Terminal 10	CH1 Relay C	
Terminal 11	CH1 Relay N/C	
Terminal 12	CH2 Relay N/O	
Terminal 13	CH2 Relay C	
Terminal 14	CH2 Relay N/C	



Dimensions (with mounting plate) 6.3" L x 4.8" W x 2.3" H

### CONTROLS & INDICATORS

POWER/TX LED	Illuminates Green when power is applied, changes to Red when transmitting.
LED1	Green LED illuminates continuously while relay #1 is energized
LED2	Green LED illuminates continuously while relay #2 is energized
CH1 – CH3 Dry Contact Inputs	Transmit individual RF codes to the remote transceiver
REL1 & REL2	Two SPDT output control relays
RF1	RF Module that transmits/receives data for corresponding unit



38/44/468-6000X REU.4

# AIR-EAGLE® SR PLUS

2.4 GHz RF Transceiver

**MODEL 36-6000-120VAC**

## RELAY OPERATION

Button or Input Signal Received	Relay Function
1	Relay 1 Energizes, Maintained Momentary
2	Relay 2 Energizes, Maintained Momentary

## FREQUENCY SET-UP

The unit is shipped from the factory with SEL1 switches in the open positions. The relays will operate as maintained momentary and unit is receiving commands on frequency one. If you wish to change the default frequency setting, follow the instructions on the table below.

- 1) Remove power from unit
- 2) Remove top cover.
- 3) Select desired network frequency using table below.
- 4) Reattach cover and apply power.
- 5) Programming is now complete.

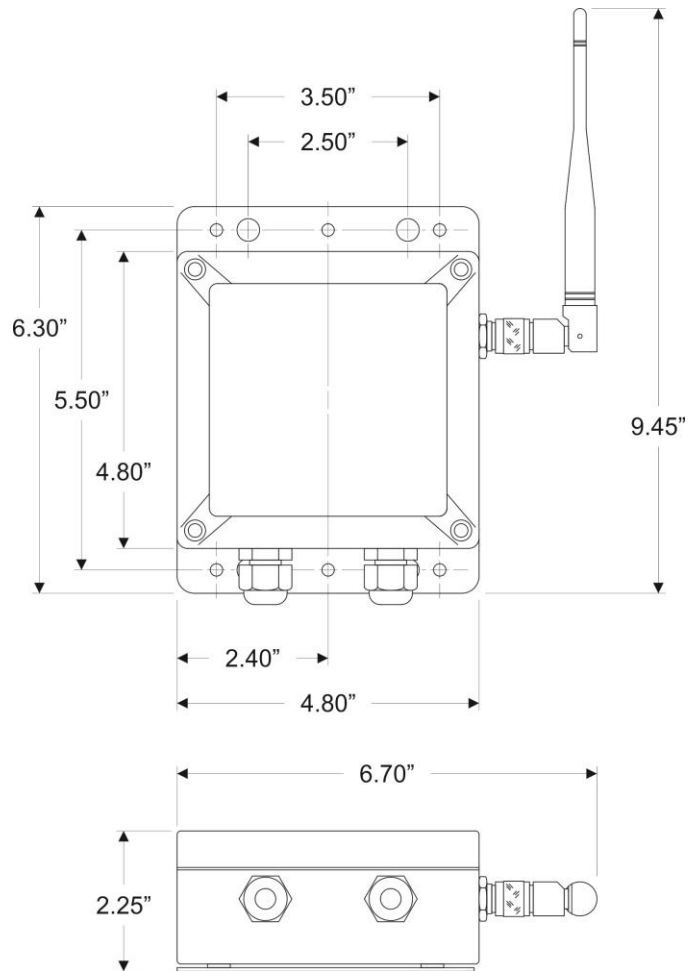
### OTHER

SEL1 (SW1-4)	Reserved for future use			
FREQUENCY SET-UP				
	Network Frequency	SW5	SW6	SW7
SEL1 (SW5-7)	1	OPEN	OPEN	OPEN
	2	CLOSED	OPEN	OPEN
	3	OPEN	CLOSED	OPEN
	4	CLOSED	CLOSED	OPEN
	5	OPEN	OPEN	CLOSED
	6	CLOSED	OPEN	CLOSED
	7	OPEN	CLOSED	CLOSED
	8	CLOSED	CLOSED	CLOSED

## SPECIFICATIONS

Power Input	100-240 VAC, 16 W, 50/60 Hz from supplied wall adapter
Relay Contacts	SPDT 5 amp @ 120VAC or 30VDC
Fuse Protected	1 amp
Transceiver Frequency	2.4 GHz Spread Spectrum
RF Output Power	60 mW
Transceiver Range	Approximately 600 feet
Transceiver Channels	8 Independent Network Frequencies
Antenna Connection	TNC Bulkhead
Operating Temperature	-40° F to +185° F
Enclosure	Polycarbonate, IP66 (NEMA 4)
Weight	Approx 2 lbs.

## DIMENSIONS



## REPLACEMENT PARTS & ACCESSORIES

PC Board (Main)	36-6002-DC
Standard Antenna (Included):	
2.4GHz TNC Portable Antenna	49-1201
Optional Antennas and Accessories – Used to increase range in both non line of sight and line of sight applications. - Contact BWI Eagle for recommendations	
2.4GHz Thru-Hole Mount Mobile Antenna	49-2201
2.4GHz Magnetic Mount Mobile Antenna	49-2202
2.4GHz Omni Directional Antenna	49-3201
2.4GHz 13dB Yagi Antenna	49-3202
Flex Coax Cable w/Connectors – Connects external antenna(s) to base unit(s).	49-4000-XX (XX = # of Feet)
Inline Lightning Arrestor	49-5002
* = Line of Sight	

# AIR-EAGLE® SR PLUS

2.4 GHz RF Transceiver

**MODEL 36-6000-120VAC**

## LIMITED WARRANTY STATEMENT

BWI Eagle Inc. warrants the Air-Eagle Remote Control System, if properly used and installed, will be free from defects in material and workmanship for a period of 1 year after date of purchase. Said warranty to include the repair or replacement of defective equipment. This warranty does not cover damage due to external causes, including accident, problems with electrical power, usage not in accordance with product instructions, misuse, neglect, alteration, repair, improper installation, or improper testing. This limited warranty, and any implied warranties that may exist under state law, apply only to the original purchaser of the equipment, and last only for as long as such purchaser continues to own the equipment. This warranty replaces all other warranties, express or implied including, but not limited to, the implied warranties or merchantability and fitness for a particular purpose. BWI Eagle makes no express warranties beyond those stated here. BWI disclaims without limitation, implied warranties of merchantability and fitness for a particular purpose. Some jurisdictions do not allow the exclusion of implied warranties so this limitation may not apply to you. To obtain warranty service, contact BWI Eagle for a return material authorization. When returning equipment to BWI Eagle, the customer assumes the risk of damage or loss during shipping and is responsible for the shipping costs incurred.

---

DOCUMENT DATE: 10/14/15 / PRODUCT REV.4

---



105 Bonnie Drive  
Butler, PA 16002  
(724) 283-4681  
Fax (724) 283-5939  
[www.bwieagle.com](http://www.bwieagle.com)